

Customer :

customer

Customer part :

customer part

Comment :

Comment

S1=0.01

S2=0.19

Tmax=550

Tp S2=589.0

PI=0.07

HI=22

Sample =9322.0

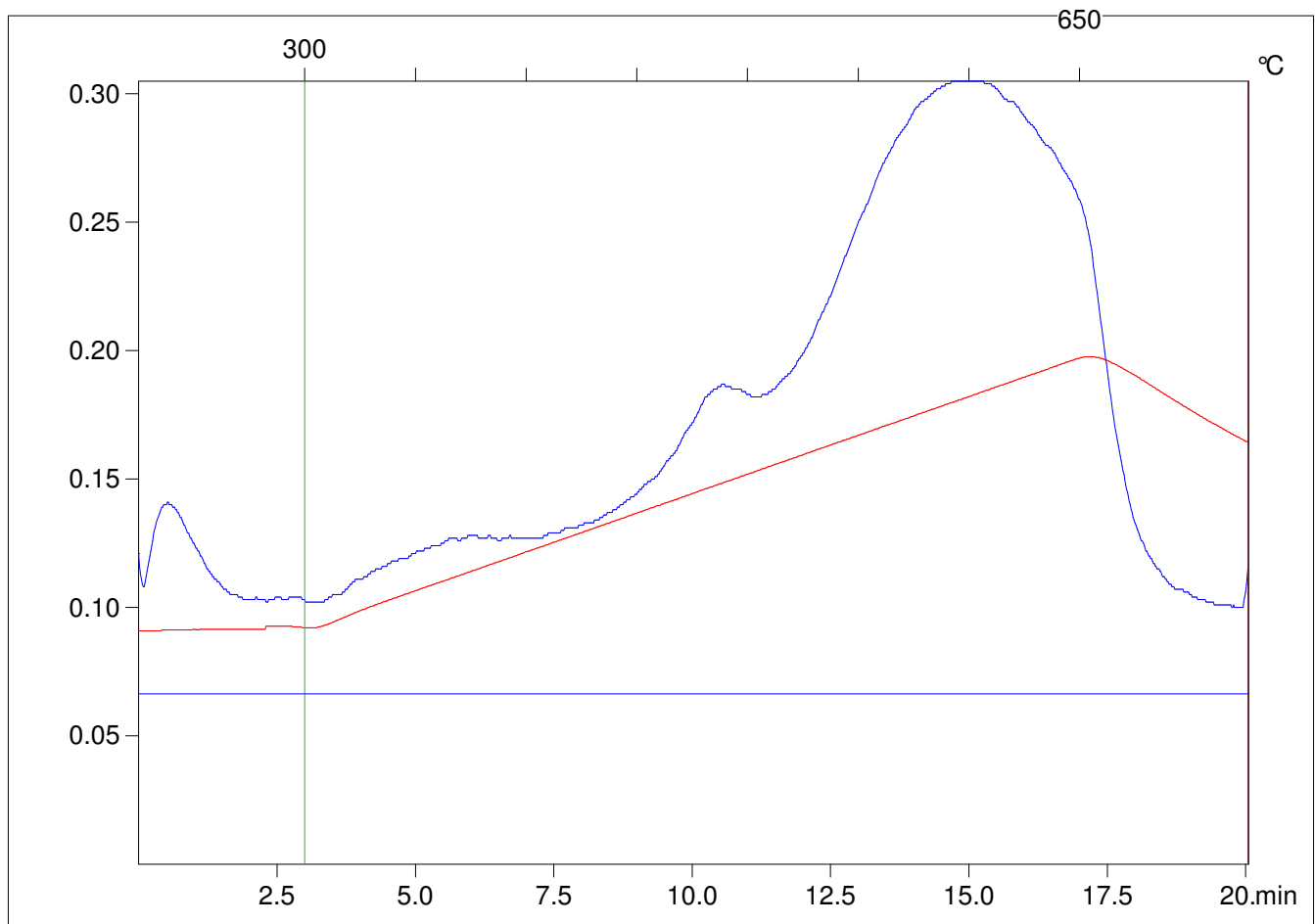
Method =Bulk Rock

Cycle=Basic

KFID(10*9)=1167

Qty =70.1

TOC=0.87



C:\VINC\PK141015\PK074.R00 : FID pyrolysis graphic

State

Pyro Status

Oxi Status